



MORE



Services that deliver a larger service portfolio,
more reliability, safety, productivity and profitability,
make **GE Healthcare ServiceSuite360^o**
an ideal service partner for you.

Expect more with ServiceSuite360^o.

GE Healthcare ServiceSuite **360^o**

All-round services that deliver more.

Enabling a safer environment for you

Ensuring that your hospital is a safe, hazard-free environment is crucial for both patients and staff. That is why at GE Healthcare we have placed safety at the core of everything we do, and have developed a suite of services that help you deliver on your safety goals.

Every detail matters.
 Because every
 patient matters.



Impact of high standard Preventive Maintenance (PM)

Preventive Maintenance is not only designed to pro-actively maintain equipment and ensure it is up and running for the maximum amount of time, it is also designed to enhance safety of both patients and staff using this equipment, through a range of standardized checks and tests depending on the type of equipment:

- Calibration to control the dose of radiation.
- Electrical and mechanical safety checks to prevent potential hazards.
- Investing in PM tool-kits and in their regular upgrades.
- Thorough checking of emergency circuits and warning indicators.
- Patient Table Checks to prevent malfunction during diagnosis or operations.
- Frequent safety Field Modification Instruction (FMI's) to correct any safety issues that are identified on the system.
- Making sure equipment settings are as per the manufacturer's specifications.

Use of certified parts

GE Healthcare services use certified parts that are manufactured/processed at sites operating under GEHC Quality Management System controlled environment or sourced from GE Healthcare approved suppliers compliant with global regulations and quality standards but also compliant with local regulations to repair and maintain medical equipment.

- GE Healthcare manufacturing sites operate at international quality standard certified facilities and/or at global/local regulatory bodies approved sites in compliance with ISO guidelines.
- Globally dedicated team of more than 300 people focused on quality assurance activities in the fields of medical device production, supplier quality and regional QMS management in compliance with the guidelines.

Dose Management

The appropriate radiation dosage is essential for diagnostic imaging practices, for each patient and every exam received over time.

DoseWatch

DoseWatch is a web-based dose management solution that captures, tracks, and reports radiation dose directly from the medical device, across multi modalities and is vendor agnostic. You can deliver the right dose by detecting the causes of excessive radiation and producing sharp and focused diagnostic images with lower exposure.



With GE Healthcare's DoseWatch, you can:

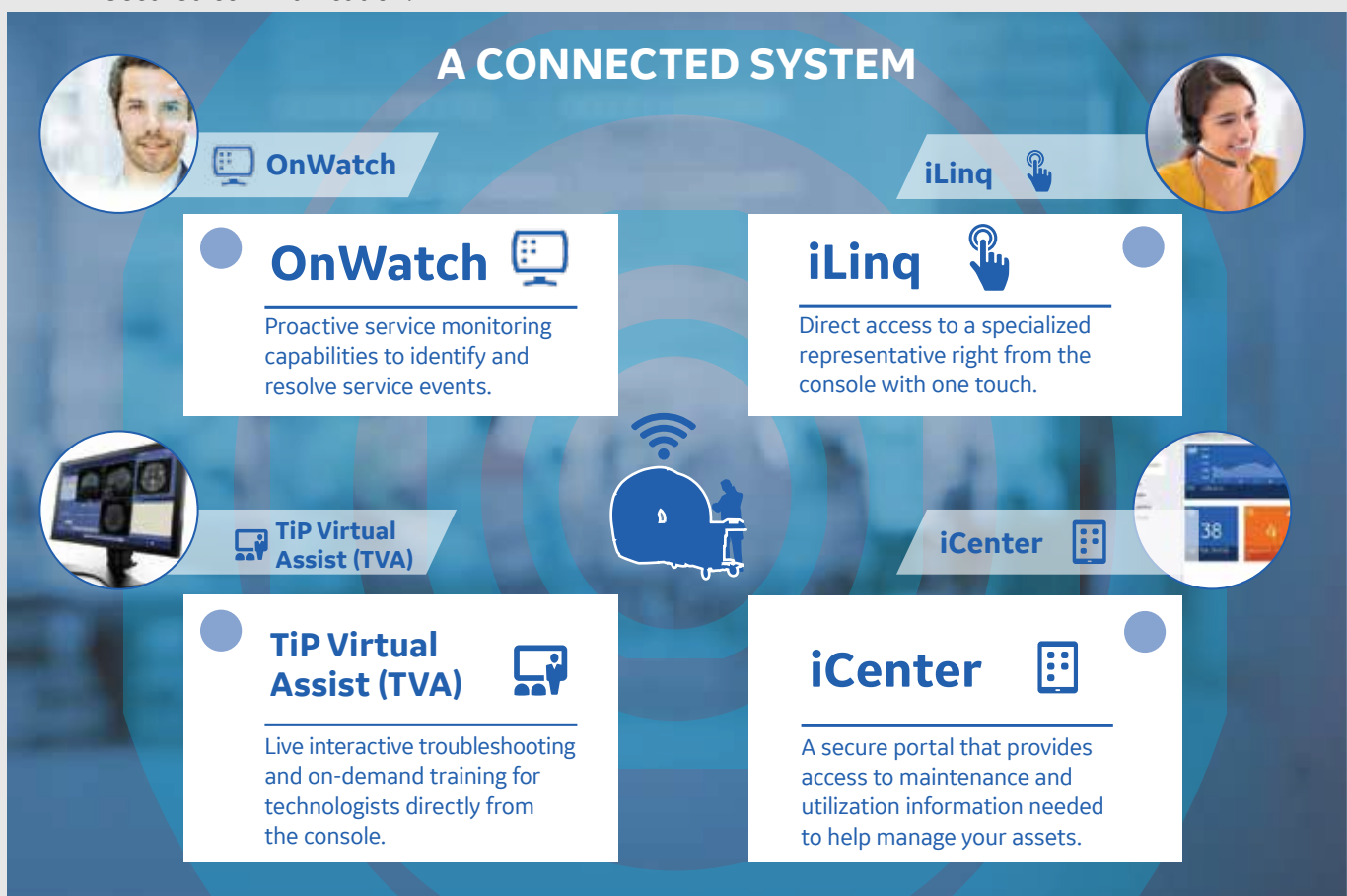
- 
Drive Awareness
 Increase dose optimization awareness by automatically receiving and storing dosimetric information from any imaging system across your health system.
- 
Optimize Performance
 Utilize embedded analysis capabilities to help your staff reduce dose and contrast variation while generating sharp images with low exposure.
- 
Maintain Compliance
 Generate and share reports to help your health system.

Are You Connected?

InSite is a powerful broadband based service network that helps maximize uptime for your healthcare equipment with digital tools that can constantly monitor your system. Help guard your hospital against equipment downtime, schedule going awry and revenue loss by connecting quickly to a GE expert.

Through this connection, GE Healthcare is able to provide remote support that provides several advantages, including:

- Higher uptime through constant system monitoring and remote fix.
- Enhanced analytics and decision support.
- Increased productivity and efficiency.
- Online clinical applications and technical support.
- Secured communication.



Closer to you, closer to your needs

Key Features

Connectivity with InSite means GE Healthcare can proactively monitor your critical medical equipment, identify potential problems and fix them before any workflow disruption.

With GE Healthcare's InSite, you can:

- Provide remote access to system configuration and diagnostic tools.
- Enable remote system diagnosis, calibration and repair.
 - Monitor key equipment parameters.
 - Alert and repair before patient care is impacted.
 - Software updates maintain application health.
- Increase asset utilization and staff productivity.

Asset Management

AssetPlus is one of the most comprehensive solutions for asset management in healthcare. Designed by biomed for biomed, this sophisticated, easy-to-use computerized maintenance management system (CMMS) can help you more efficiently manage thousands of clinical and non-clinical assets throughout your hospital system and enables data-driven decisions. AssetPlus can help you to extend the life of your equipment, reduce downtime, enhance efficiency and maintain compliance by tracking service activity throughout the lifecycle of each device. Using the comprehensive system-wide asset data, you can make decisions about maintenance and service contracts, workflow protocols and training, and make recommendations on equipment replacement to hospital administration for capital planning purposes with greater confidence.



AssetPlus is a hospital-wide business management software solution that helps biomedical managers make data-driven decisions.

Efficient management of thousands of assets **system-wide** can help enhance operations, utilization and compliance.

With GE Healthcare's AssetPlus, you can:

Empower your staff

By consolidating and managing the data for all your hospital systems in one place, AssetPlus gives your staff the information they need to help them perform their jobs more efficiently and with greater satisfaction. It streamlines workflow, eliminates time spent tracking down maintenance and training records, and helps you dispatch jobs to your staff.

Help enhance financial results

AssetPlus gives you the information you need to help prevent downtime and unplanned replacement of critical assets. With a complete real-time digital library of all clinical and non-clinical assets throughout your system and the data and documentation that goes with each asset, you can help reduce the risk of unplanned interruption to patient care.

Make decisions with confidence

The Business Intelligence Advanced Module extends the benefits of AssetPlus beyond the engineering and technical departments to hospital executives and strategic planners. It seamlessly interfaces with all your hospital system financial and ERP systems and transforms thousands of records into useful, actionable information.

LifeCycle Management Solutions

Are optimizing asset utilization, maximizing efficiency and clinical outcomes, in a secured environment your daily challenges?

- Our mission is to enable you to tackle them!

Is differentiating yourself by providing a unique patient experience in a cost effective manner has become a must?

- GEHC's Life Cycle Management Solutions enable you to achieve this!

Advanced Visualization Powered by AW Volume Share 7



3 Highlights

Enhanced diagnostic precision

Care pathway focus, with **7** new advanced 3D post-processing applications.

Improved productivity

-20% reading time comparing VS7 to VS5.

Unexpected simplicity

1-click access to favorite tools.



3 Platforms with Volume Share 7

AW VolumeShare 7

Workstation(s) solution

Full portfolio of AW apps **50+**

Concurrent users : **1 max**

AW Server 3.2

Department solution & PACS integration

Broad offering of AW apps **+37**

Concurrent users : **12 max**

Centricity™ Universal Viewer 6

Embedded AW applications

Embedded AW apps **+20**

Concurrent users : **60 max**

Options and Upgrades:

- Easy access to the latest technologies.
- Unique opportunity to expand your system lifespan.
- Grow by broadening your scope.
- Advanced clinical application capabilities.

With GE Healthcare's Options and Upgrades, you can:

- Increase asset productivity.
- Optimize workflow.
- Increase clinical confidence.
- Leverage clinical application capabilities to access new care areas.



SIGNA™ Explorer Lift

Imagine what MR can be.





MORE

More services

ServiceSuite360° provides proactive, preventive and productive services for all GE equipment.

More reliable

All the parts are quality tested by GE Healthcare to ensure optimum equipment performance.

More ROI

ServiceSuite360° offers smart services that improve the performance of both your equipment and technical team.

Services that deliver a larger service portfolio, more reliability, safety, productivity and profitability, make **GE Healthcare ServiceSuite360°** an ideal service partner for you.

Expect more with ServiceSuite360°.

GE Healthcare ServiceSuite **360°**

All-round services that deliver more.



DO YOU WANT MORE



Contact details

Saudi Arabia

800 124 30 02

www.gehealthcare.sa

UAE

800 36 46

www.gehealthcare.ae